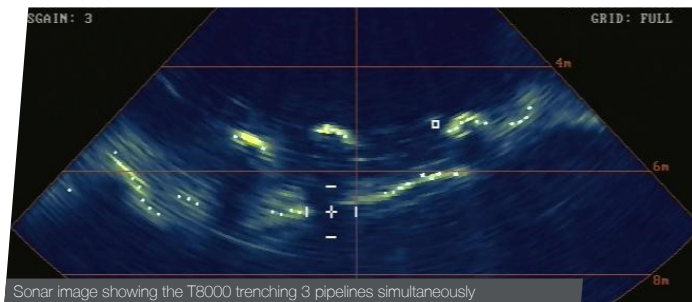




Case study

Pipeline trenching

Cal Dive International Inc.



Scope of work

James Fisher Subsea Excavation's T8000 mass flow excavation spread was mobilized on board the Cal Dive Pipelay Barge Lonestar. The workscope was to trench in 10 pipelines offshore the Bahamas.

10 pipelines had been laid in close proximity to each other and the minimum requirement was trenching them level with seabed. The pipeline details were as follows:

- 4 x 30" (35" OD)
- 4 x 24" (28" OD) – one of these had a 4" piggy back line
- 2 x 14" (16 ½" OD)

A total length of approximately 2300' of each pipeline was to be trenched.

Client	Location	Vessel	Water depth	Date	Conditions
Cal Dive	Bahamas	Cal Dive Lonestar	45-90'	Feb-11	Sand

Outcome

All 10 pipelines were trenched to specification in 36 ½ operational hours, an overall progress rate of 3.2 m/min. Due to the soft nature of the soils and the pipelines being laid close to each other, it was possible to trench more than one pipeline in at a time. The non-contact method of excavation produced by JFSE's tools was ideal in this situation, where a sled or plough could not be used.